



Preview Test: Glial Tumor Quiz 1

Test Information

Description
 Instructions
 Multiple Attempts This test allows multiple attempts.
 Force Completion This test can be saved and resumed later.

▼ Question Completion Status:

Save All Answers

Save and Submit

QUESTION 1

1 points

Save Answer

A hypercellular primary cerebral neoplasm with foci of necrosis and pseudopalisading of nuclei is a/an:

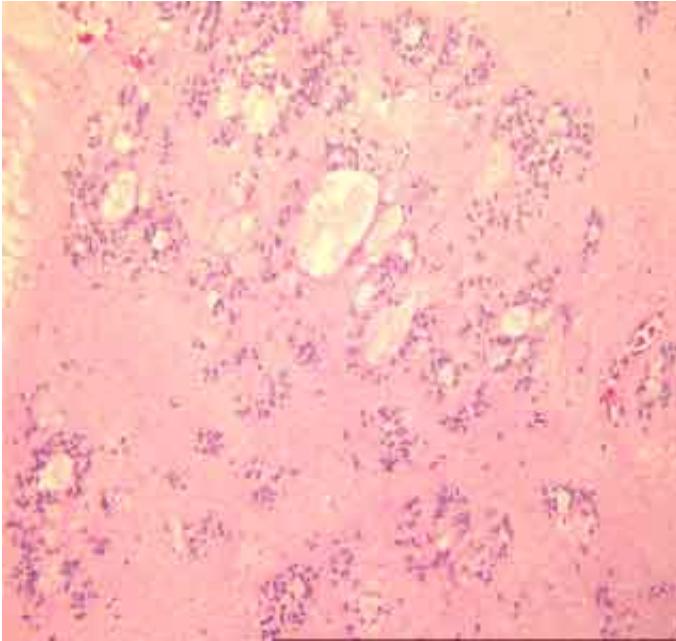
- A. Astrocytoma
- B. Glioblastoma multiforme
- C. Meningioma
- D. Ependymoma
- E. All of the above.

QUESTION 2

1 points

Save Answer

This microscopic image



- shows the typical pattern of a subependymoma
- is benign and slow growing
- commonly intraventricular
- all are correct

QUESTION 3

1 points

Save Answer

Which of the following is a feature of a pleomorphic xanthoastrocytoma:

- A. Typically presents in patients > 50 years of age
- B. Majority contain lipidized astrocytes (xanthoastrocytes)
- C. Frequently contain eosinophilic granular bodies and reticulin deposition.
- D. Is an infiltrative lesion

QUESTION 4

1 points

Save Answer

Which of the following **is not** a histological feature of a classic oligodendroglioma:

- A. chicken wire vascular pattern
- B. fried-egg appearance
- C. nuclear pseudoinclusions
- D. minigemistocytes

QUESTION 5

1 points

Save Answer

Which of the following features is a feature of diffuse astrocytoma as opposed to reactive process

- A. Rosenthal fibers
- B. Microcystic change

- C. Reactive astrocytes
- D. Creutzfeldt cells

QUESTION 6**1 points****Save Answer**

Which of the following is not typical of gangliogliomas:

- A. Occur in patients with a history of chronic seizure disorder
- B. Are commonly cystic masses with an enhancing nodule on imaging studies
- C. Frontal lobe is the most common location
- D. Are predominantly a neoplasm of children and young adults

QUESTION 7**1 points****Save Answer**

Loss of function of which of the following gene products predicts chemotherapy and/or radiotherapy in anaplastic oligodendrogliomas:

- A. p53
- B. EGFR
- C. p16
- D. None of the above

QUESTION 8**1 points****Save Answer**

Which of the following factors is the most important factor in determining the prognosis of an ependymoma:

- A. Hypercellularity
- B. Necrosis
- C. Endothelial proliferation
- D. Completeness of surgical resection

QUESTION 9**1 points****Save Answer**

Subependymal giant cell astrocytomas are associated with which of the following disorders:

- A. Von Hippel-Lindau disease
- B. Neurofibromatosis type I
- C. Cowden s disease
- D. Neurofibromatosis type II
- E. Tuberous sclerosis
- F. Gorlin s syndrome

QUESTION 10**1 points****Save Answer**

Which of the following neoplasms best fulfills the following description: A superficial supratentorial largely cystic tumor occurring in young children that is frequently attached to the dura which on histologic examination consists of admixed spindle cells and ganglion cells embedded in a reticulin-rich stroma :

- A. Dysembryoplastic neuroepithelial tumor
- B. Atypical teratoid/rhabdoid tumor
- C. Desmoplastic infantile ganglioglioma
- D. Pleomorphic xanthoastrocytoma

Click Save and Submit to save and submit. Click Save All Answers to save all answers.

Save All Answers

Save and Submit