



Neuropathology Quizzes Neuroanatomy/Histology Quiz

**Preview Test: Neuroanatomy/Histology Quiz 2**Edit Mode is: ● ON ?

## Preview Test: Neuroanatomy/Histology Quiz 2

### Test Information

Description

Instructions

Multiple Attempts This test allows multiple attempts.

Force Completion This test can be saved and resumed later.

▼ Question Completion Status:

Save All Answers

Save and Submit

### QUESTION 1

1 points

Save Answer

Rosenthal fibers are:

- Neurofibrillary tangles in neurons
- Perivascular astrocytic feet processes
- Myelinated tracts
- Composed of dense aggregates of glial filaments
- All of the above

### QUESTION 2

1 points

Save Answer

Some phagocytes (macrophages) of the central nervous system involved in neuronophagia are:

- Neurons
- Oligodendroglia
- Microglia

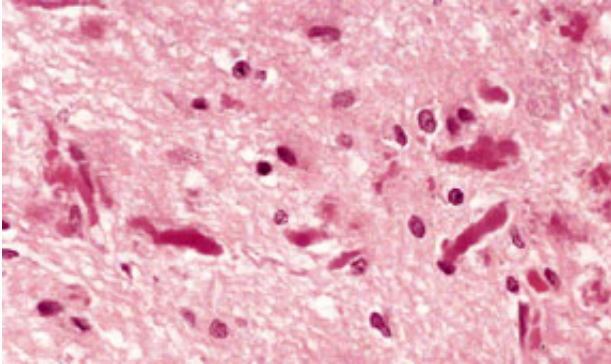
- Alzheimer type 2 astrocytes
- Schwann cells

**QUESTION 3**

1 points

Save Answer

What are these structures? (H&E, Ellison & Love, p.1.12)



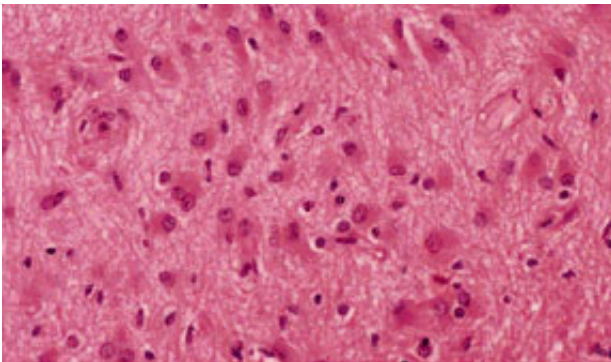
- Axonal torpedos
- Eosinophilic granular bodies
- Psammoma bodies
- Rod cells
- Rosenthal fibers

**QUESTION 4**

1 points

Save Answer

What is the pathologic finding? (H&E. Ellison & Love, p. 1.11)



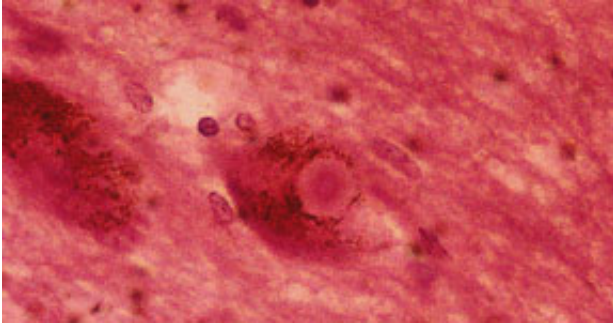
- Chromatolysis
- Gitter cells
- Lipofuscin
- Reactive gliosis
- Satellitosis

**QUESTION 5**

1 points

Save Answer

What is this structure? (H&E, Ellison & Love, p. 28.3)



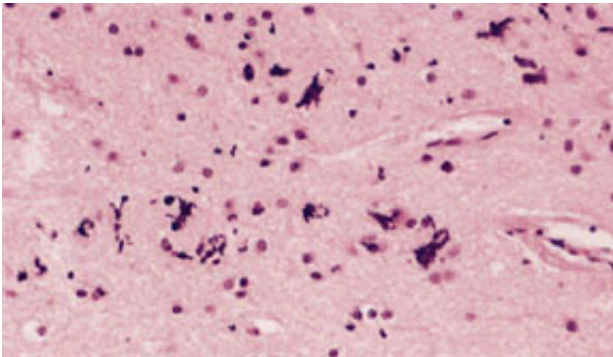
- Cowdry type A inclusion
- Lewy body
- Lyssa body
- Marinesco body
- Psammoma body

### QUESTION 6

1 points

Save Answer

What type of change is present? (H&E, Ellison & Love, p. 1.5)



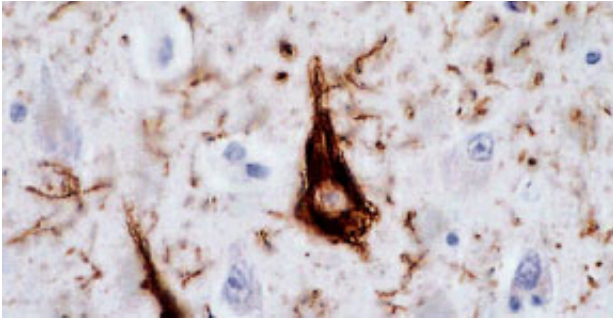
- Atrophy
- Ballooning
- Ferruginization
- Viral inclusions
- Lipofuscin

### QUESTION 7

1 points

Save Answer

What type of inclusion(s) are present? (Immuno- staining with anti-phosphorylated tau, Ellison & Love, p. 31.11)



- Cowdry
- Granulovacuolar degeneration
- Lipofuscin
- Marinesco bodies
- Neurofibrillary tangles

**QUESTION 8****1 points****Save Answer**

Which cell type is most susceptible to ischemia in adults?

- Astrocyte
- Oligodendrocyte
- Microglia
- Neuron
- Schwann cell

**QUESTION 9****1 points****Save Answer**

Which of the following inclusions consist of abnormal neuronal filamentous proteins?

- Cowdry Type A inclusions
- Marinesco bodies
- Senile (neuritic) plaques
- Negri bodies
- Inclusions of the Progressive Multifocal Leukoencephalopathy

*Click Save and Submit to save and submit. Click Save All Answers to save all answers.*

**Save All Answers****Save and Submit**