



Neuropathology Quizzes Neuroanatomy/Histology Quiz

**Preview Test: Neuroanatomy/Histology Quiz 3**Edit Mode is: ● ON ?

## Preview Test: Neuroanatomy/Histology Quiz 3

### Test Information

Description

Instructions

Multiple Attempts This test allows multiple attempts.

Force Completion This test can be saved and resumed later.

▼ Question Completion Status:

Save All Answers

Save and Submit

### QUESTION 1

1 points

Save Answer

Nissl bodies in the neuron are the light microscopic counterparts of which organelle listed below?

- Golgi apparatus
- Rough endoplasmic reticulum and free ribosomes
- Nucleolus and chromatin
- Neurofilaments
- Neurotubules

### QUESTION 2

1 points

Save Answer

Rosenthal fibers are:

- Neurofibrillary tangles in neurons
- Perivascular astrocytic feet processes
- Myelinated tracts

- Composed of dense aggregates of glial filaments
- All of the above

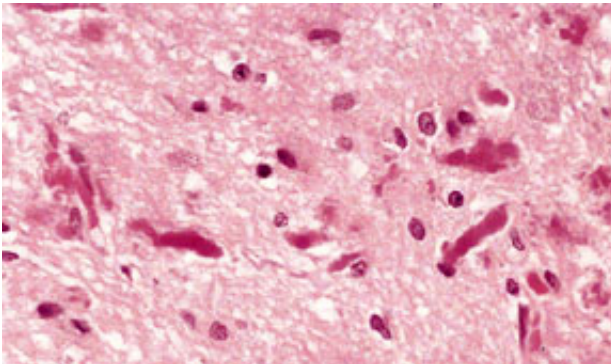
**QUESTION 3****1 points****Save Answer**

The term Wallerian degeneration refers to:

- Destruction of axon and myelin proximal to the site of injury
- Injury to nerve cell body due to irradiation
- Focal demyelination of central white matter
- Ischemic neuronal change
- Destruction of axon and myelin distal to the site of nerve fiber injury

**QUESTION 4****1 points****Save Answer**

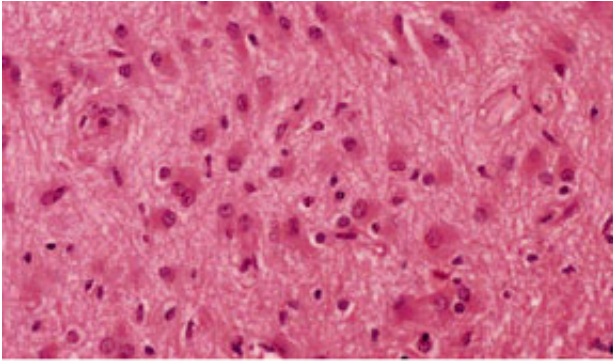
What are these structures? (H&E, Ellison & Love, p.1.12)



- Axonal torpedos
- Eosinophilic granular bodies
- Psammoma bodies
- Rod cells
- Rosenthal fibers

**QUESTION 5****1 points****Save Answer**

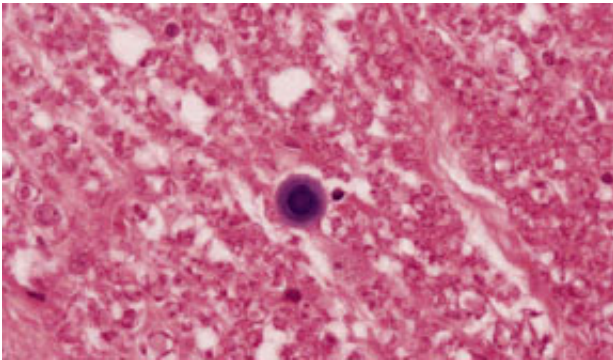
What is the pathologic finding? (H&E. Ellison & Love, p. 1.11)



- Chromatolysis
- Gitter cells
- Lipofuscin
- Reactive gliosis
- Satellitosis

**QUESTION 6****1 points****Save Answer**

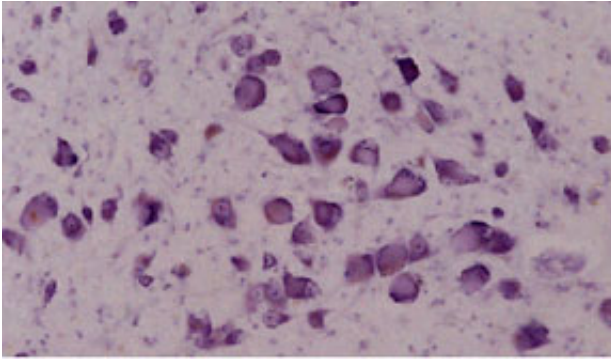
What is this structure? (H&E, Ellison & Love, p. 1.15)



- Alzheimer s type II astrocyte
- Bergman gliosis
- Corpora amylacea
- Eosinophilic granular body
- Negri body

**QUESTION 7****1 points****Save Answer**

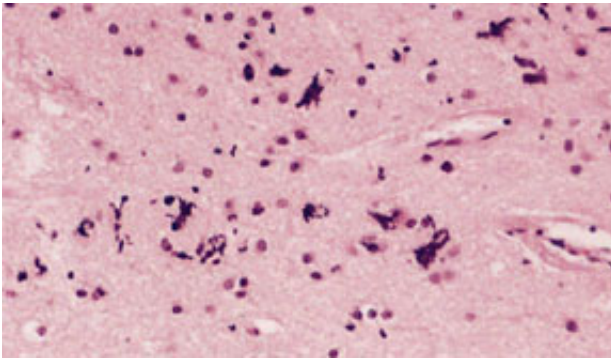
What type of change is present in these neurons from the hypoglossal nucleus? (Cresyl violet, Ellison & Love, p. 21.4)



- Acute necrosis
- Atrophy
- Chromatolysis
- Ferruginization
- Lipofuscin

**QUESTION 8****1 points****Save Answer**

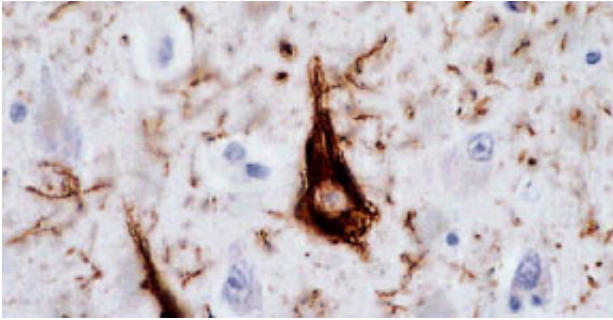
What type of change is present? (H&E, Ellison & Love, p. 1.5)



- Atrophy
- Ballooning
- Ferruginization
- Viral inclusions
- Lipofuscin

**QUESTION 9****1 points****Save Answer**

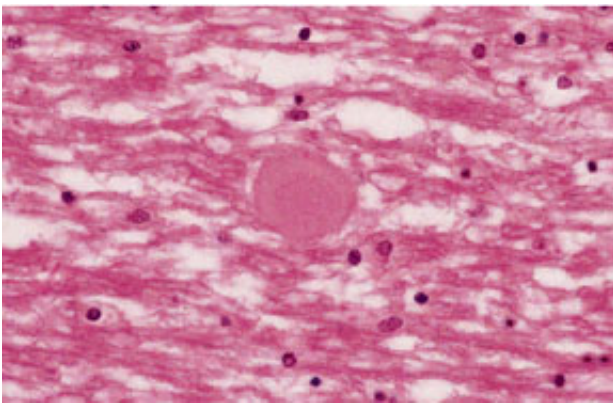
What type of inclusion(s) are present? (Immuno- staining with anti-phosphorylated tau, Ellison & Love, p. 31.11)



- Cowdry
- Granulovacuolar degeneration
- Lipofuscin
- Marinesco bodies
- Neurofibrillary tangles

**QUESTION 10****1 points****Save Answer**

What type of structure is present? (H&E, Ellison & Love, p. 1.9)



- Axonal spheroid
- Lewy body
- Nissl substance
- Pick body
- Rosenthal fiber

*Click Save and Submit to save and submit. Click Save All Answers to save all answers.*

**Save All Answers****Save and Submit**