

Preview Test: Neurodegenerative Quiz 2

Test Information

Description

Instructions

Multiple Attempts This test allows multiple attempts.

Force Completion This test can be saved and resumed later.

▼ Question Completion Status:

Save All Answers

Save and Submit

QUESTION 1

1 points

Save Answer

Neurofibrillary tangles in Alzheimer's Disease

- are composed of a hypophosphorylated protein
- are composed primarily of neurofilament protein
- are composed of aggregates of paired helical filaments
- are not visible with standard silver stains like Bielschowsky

QUESTION 2

1 points

Save Answer

New variant CJD (vCJD) is a disease associated with mad cow disease and

- does not involve abnormal accumulation of prion protein
- is characterized by numerous "florid" plaques
- does not show spongiform changes
- does not involve the cerebellum

QUESTION 3**1 points****Save Answer**

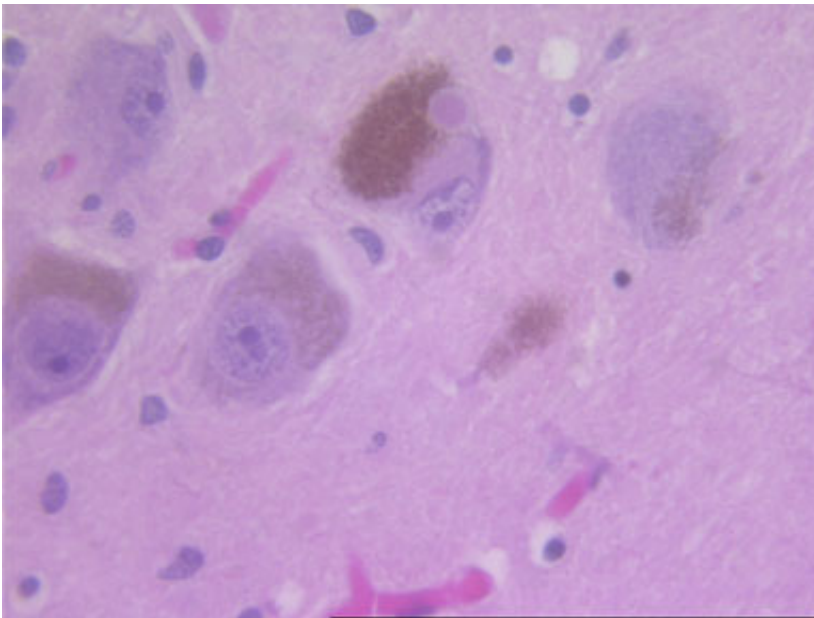
- Progressive supranuclear palsy
- rarely involves the substantia nigra
 - has numerous cortical neurofibrillary tangles
 - has numerous subcortical neurofibrillary tangles
 - commonly shows cortical atrophy

QUESTION 4**1 points****Save Answer**

- Tau-positive globose neurofibrillary tangles are characteristic of
- Pick's disease
 - Lewy body dementia
 - Huntington's Disease
 - Progressive supranuclear palsy

QUESTION 5**1 points****Save Answer**

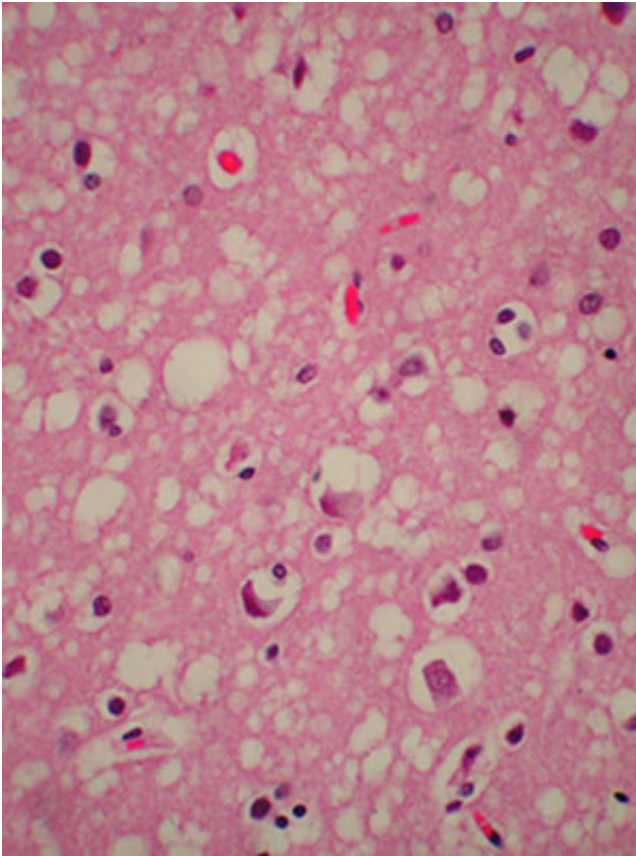
The eosinophilic intraneuronal inclusion shown in the image will be strongly immunostained with



- tau
- alpha synuclein
- ubiquitin
- both B and C

QUESTION 6**1 points****Save Answer**

The most likely diagnosis



- HIV encephalitis
- Creutzfeldt-Jakob Disease
- Progressive supranuclear palsy
- amyotrophic lateral sclerosis

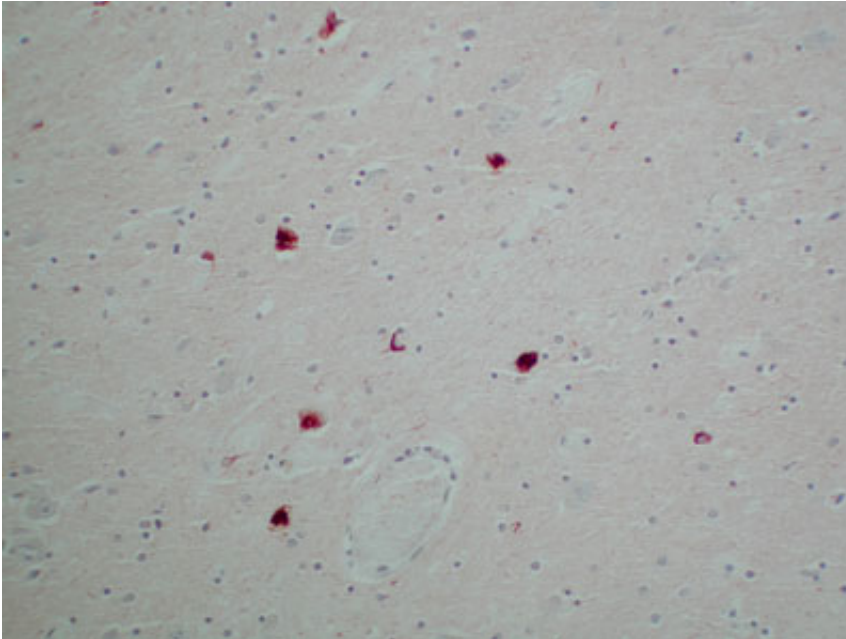
QUESTION 7**1 points**[Save Answer](#)

The presence of neurofibrillary tangles in the subthalamic nucleus, substantia nigra, and periaqueductal gray matter characterize

- Alzheimer's Disease
- Pick's Disease
- Huntington's disease
- Progressive supranuclear palsy

QUESTION 8**1 points**[Save Answer](#)

This tau immunostained section show numerous tangles in the subthalamic nucleus - these findings are characteristic of



- Alzheimer's Disease
- Huntington's Disease
- Progressive supranuclear palsy
- Dementia with Lewy Bodies

QUESTION 9**1 points**[Save Answer](#)

Ubiquitin skeins are characteristic of

- Alzheimer's Disease
- Huntington's Disease
- Progressive supranuclear palsy
- Amyotrophic lateral sclerosis

QUESTION 10**1 points**[Save Answer](#)

Vonsattel grading system is used to evaluate:

- Alzheimer's Disease
- Progressive Supranuclear Palsy
- Amyotrophic lateral sclerosis
- Huntington's Disease

Click Save and Submit to save and submit. Click Save All Answers to save all answers.

[Save All Answers](#)[Save and Submit](#)

