



Preview Test: Neurodegenerative Quiz 3

Test Information

Description

Instructions

Multiple Attempts This test allows multiple attempts.

Force Completion This test can be saved and resumed later.

Question Completion Status:

Save All Answers

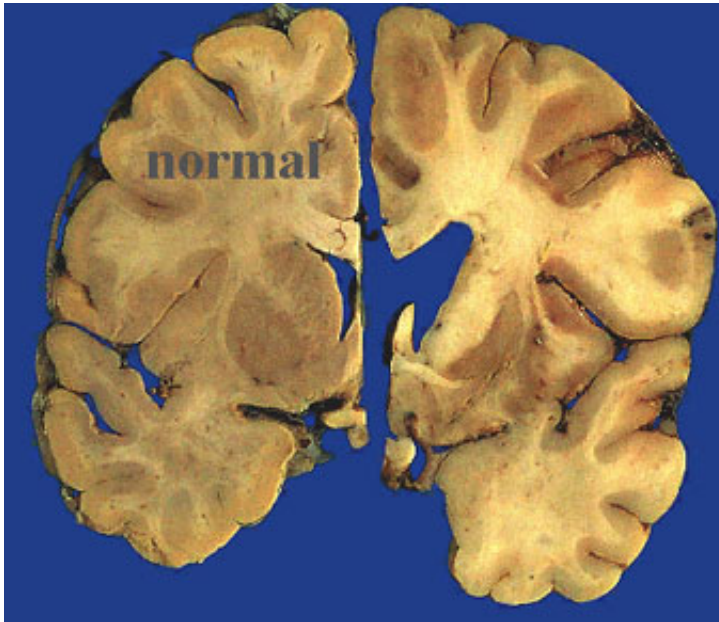
Save and Submit

QUESTION 1

1 points

Save Answer

Compared to the normal brain on the left, the brain on the right shows



- cortical atrophy consistent with Alzheimer's Disease
- caudate atrophy consistent with Huntington's Disease
- normal variation of ventricular size
- none of the above

QUESTION 2**1 points****Save Answer**

Creutzfeldt Jakob Disease

- often shows severe cortical atrophy
- nearly always has prion plaques in the cerebellum
- has spongiform changes in the gray matter
- has spongiform changes in the white matter

QUESTION 3**1 points****Save Answer**

Diseases characterized by abnormal accumulation of tau in neurons include all EXCEPT

- Progressive supranuclear palsy
- Alzheimer's Disease
- Pick's Disease
- Parkinson's Disease

QUESTION 4**1 points****Save Answer**

Huntington's Disease

- typically shows severe atrophy of the caudate nucleus
- typically shows severe loss of neurons in the substantia nigra
- often shows hippocampal atrophy

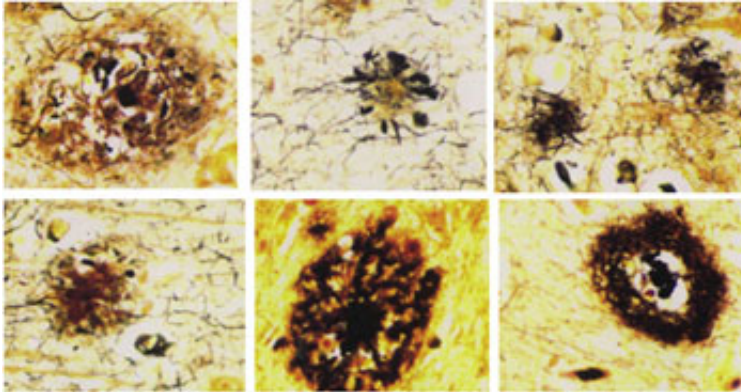
has tau-positive inclusions in both neurons and glial cells

QUESTION 5

1 points

Save Answer

The abnormalities demonstrated on the this Bielschowsky stain are best described as



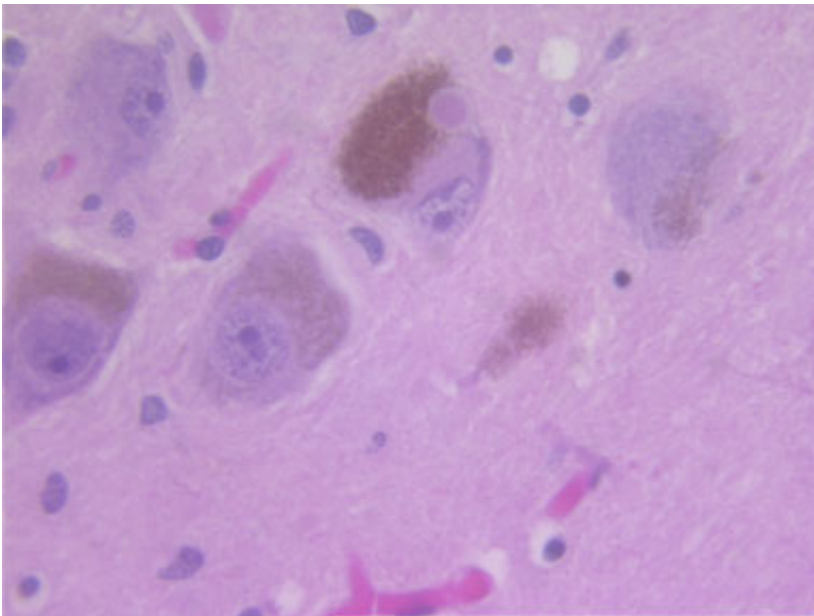
- diffuse plaques
- neuritic plaques
- prion plaques
- neuropil threads

QUESTION 6

1 points

Save Answer

The eosinophilic intraneuronal inclusion shown in the image will be strongly immunostained with



- tau
- alpha synuclein
- ubiquitin
- both B and C

QUESTION 7**1 points****Save Answer**

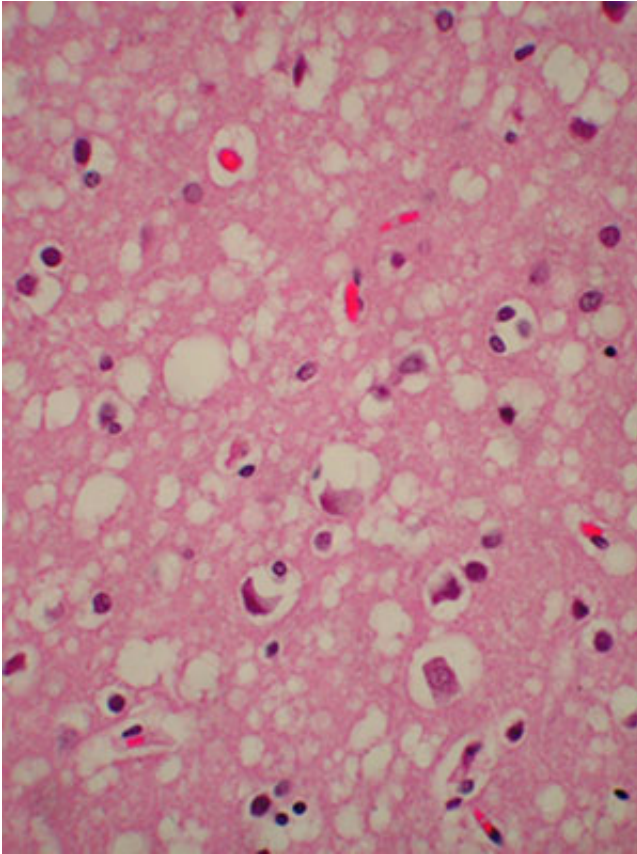
The gross appearance of this brain is most consistent with which of the following diagnoses:



- Parkinson's Disease
- Creutzfeldt-Jakob Disease
- Pick's Disease
- Alzheimer's Disease

QUESTION 8**1 points****Save Answer**

The most likely diagnosis



- HIV encephalitis
- Creutzfeldt-Jakob Disease
- Progressive supranuclear palsy
- amyotrophic lateral sclerosis

QUESTION 9**1 points****Save Answer**

The most likely diagnosis in this case is



- Parkinson's Disease
- Progressive supranuclear palsy
- Either of the above
- None of the above

QUESTION 10**1 points****Save Answer**

The presence of neurofibrillary tangles in the subthalamic nucleus, substantia nigra, and periaqueductal gray matter characterize

- Alzheimer's Disease
- Pick's Disease
- Huntington's disease
- Progressive supranuclear palsy

Click Save and Submit to save and submit. Click Save All Answers to save all answers.

Save All Answers**Save and Submit**