



Preview Test: Neuromuscular Quiz 2

Test Information

Description
Instructions
Multiple Attempts This test allows multiple attempts.
Force Completion This test can be saved and resumed later.

⌵ Question Completion Status:

Save All Answers

Save and Submit

QUESTION 1

1 points

Save Answer

Segmental demyelination and chronic inflammation:

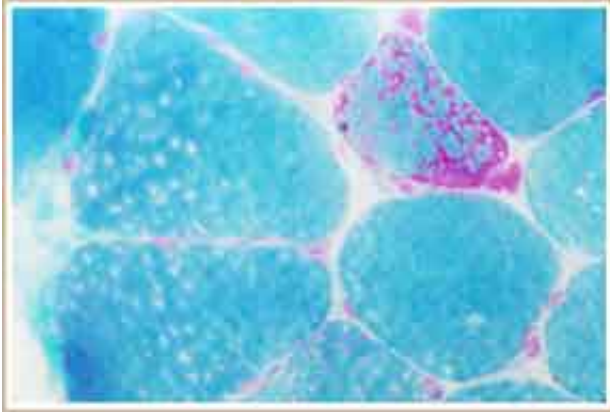
- Duchenne muscular dystrophy
- Polymyositis
- Diabetic polyneuropathy
- Charcot-Marie-Tooth disease
- Guillain-Barre syndrome

QUESTION 2

1 points

Save Answer

The abnormal fiber that is seen with Gomori trichrome staining is typical of:



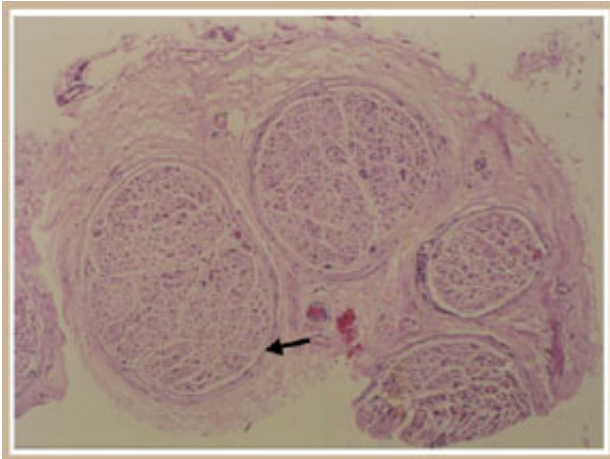
- Hypoxia
- A mitochondrial disorder
- Polymyositis
- Nemaline myopathy

QUESTION 3

1 points

Save Answer

The arrow refers to which component of peripheral nerve?



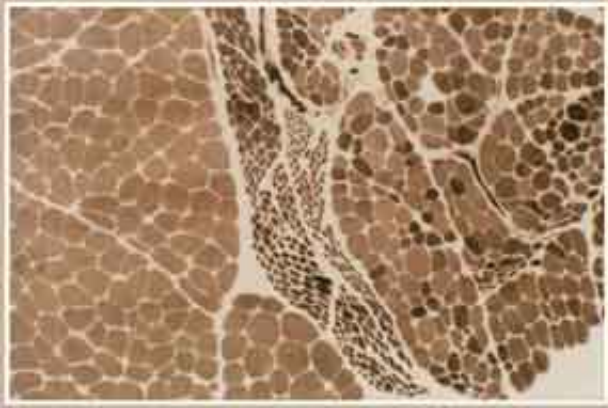
- Endoneurium
- Perineurium
- Epineurium
- None of the above

QUESTION 4

1 points

Save Answer

The findings shown on this ATPase reacted section at pH 9.4 are consistent with:



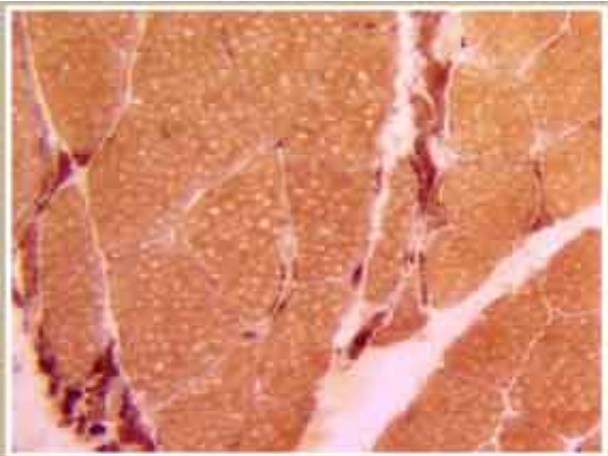
- Chronic axonal neuropathy
- Anterior horn cell disorder
- Chronic radiculopathy
- All of the above.

QUESTION 5

1 points

Save Answer

The small dark fibers with esterase are likely:



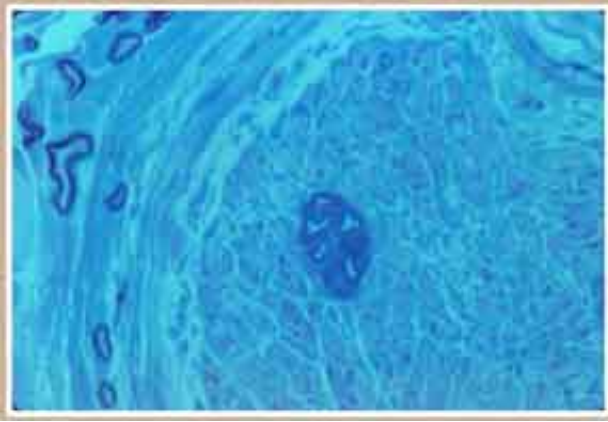
- Denervated
- Dead
- Regenerating
- Reinnervated

QUESTION 6

1 points

Save Answer

The structure shown in this plastic-embedded nerve section is indicative of:



- Axonal regeneration
- Chronic remyelination
- Leprosy
- Ischemia

QUESTION 7**1 points****Save Answer**

The teased fiber preparation shown indicates findings consistent with:



- Segmental demyelination
- Axonal degeneration
- Axonal regeneration
- Improper fixation

QUESTION 8**1 points****Save Answer**

This anti-dystrophin immunoprecipitated section is consistent with:

This anti-dystrophin immunoreacted section is consistent with:



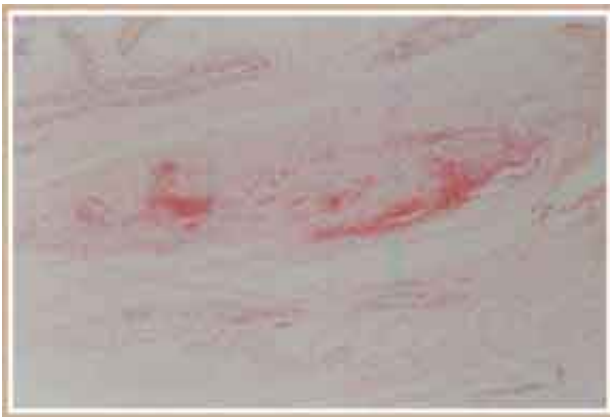
- Becker's Muscular Dystrophy
- Duchene Muscular Dystrophy
- A female carrier of a dystrophinopathy
- Normal

QUESTION 9

1 points

Save Answer

This Congo red stained nerve image is most consistent with:



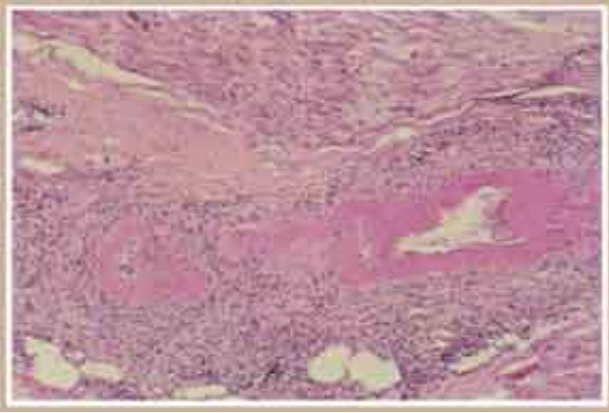
- Lymphomatous neuropathy
- Amyloid neuropathy
- Renaut bodies
- Ischemic necrosis

QUESTION 10

1 points

Save Answer

This slide is pathognomonic of:



- Necrotizing vasculitis
- Crush artifact
- Guillain Barré Syndrome
- Chronic inflammatory demyelinating polyneuropathy

Click Save and Submit to save and submit. Click Save All Answers to save all answers.

Save All Answers

Save and Submit