



## Preview Test: Non-Glial Tumor Quiz 2

### Test Information

Description

Instructions

Multiple Attempts This test allows multiple attempts.

Force Completion This test can be saved and resumed later.

▼ Question Completion Status:

Save All Answers

Save and Submit

### QUESTION 1

1 points

Save Answer

Which of the following histologic subtype of meningiomas is a WHO grade I tumor

- A. Rhabdoid
- B. Chordoid
- C. Secretory
- D. Papillary

### QUESTION 2

1 points

Save Answer

A 56 year old man is admitted to the hospital with right cerebellar dysfunction. CT scans show two lesions in the cerebellum. At surgery, yellow, slimy material in a partially cavitated mass was found. The most probable diagnosis is:

- A. Cavitary astrocytoma
- B. Glioblastoma multiforme
- C. Medulloblastoma

D. Metastatic carcinoma

---

**QUESTION 3****1 points**[Save Answer](#)

A T1-bright fluid-filled tumor that occurs within the 3<sup>rd</sup> ventricle near the foramen of Monro whose initial presentation may be sudden death:

- A. Langerhans' cell histiocytosis
- B. Colloid cyst
- C. Epidermoid
- D. Melanocytoma

---

**QUESTION 4****1 points**[Save Answer](#)

All of the following neoplasms typically demonstrate similar histologic features except:

- A. Juvenile pilocytic astrocytoma
- B. Medulloblastoma
- C. Pineoblastoma
- D. Cerebral neuroblastoma

---

**QUESTION 5****1 points**[Save Answer](#)

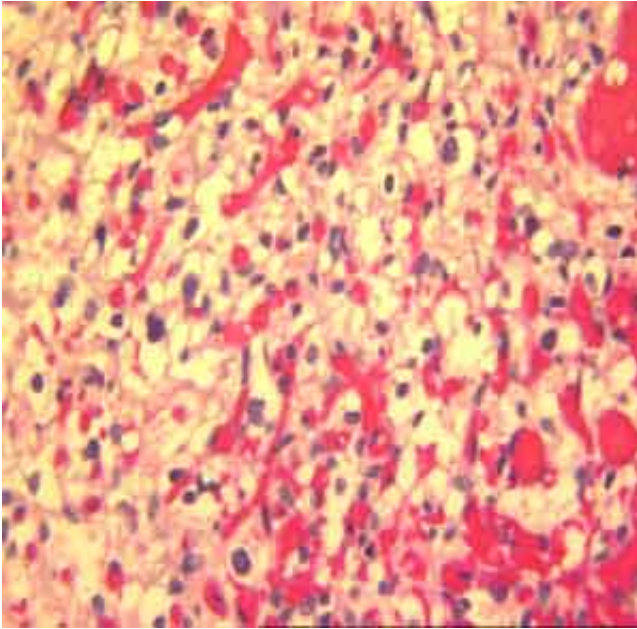
Dysplastic gangliocytomas of the cerebellum are associated with which of the following disorders:

- A. Von Hippel-Lindau disease
- B. Neurofibromatosis type I
- C. Cowden's disease
- D. Neurofibromatosis type II
- E. Tuberous sclerosis
- F. Gorlin syndrome

---

**QUESTION 6****1 points**[Save Answer](#)

This lesion of the cerebellum



- A. is commonly associated with Von Hippel Lindau
- B. contains inhibin A positive stromal cells
- C. is rich in reticulin
- D. all are correct

**QUESTION 7****1 points****Save Answer**

A 26 year old woman with multiple skin nodules and developed deafness in the left ear and left facial numbness. Imaging studies reveal a mass in the left cerebellopontine angle. It is most likely:

- A. Ependymoma
- B. Oligodendroglioma
- C. Schwannoma
- D. Pituitary adenoma
- E. Astrocytoma

**QUESTION 8****1 points****Save Answer**

Which of the following is incorrect regarding choroids plexus tumors:

- A. The majority (80%) of lesions in the lateral ventricles occur in young (under 20 years of age) individuals.
- B. Transthyretin (pre-albumin) immunohistochemistry may be useful in confirming the diagnosis
- C. Papillomas have a high rate of recurrence
- D. The majority of lesions in adults occur in the 4<sup>th</sup> ventricle

**QUESTION 9****1 points****Save Answer**

Which of the following features is least helpful in differentiating metastatic carcinoma from

glioblastoma multiforme (GBM):

- A. Circumscribed lesion
- B. Multiple lesions
- C. AE1/AE3 immunoreactivity
- D. Lack of pseudopallisading necrosis

---

**QUESTION 10****1 points****Save Answer**

Meningiomas are associated with loss of chromosome 17.

- True
- False

*Click Save and Submit to save and submit. Click Save All Answers to save all answers.*

**Save All Answers****Save and Submit**