



Preview Test: Ophthalmic Pathology Quiz 1

Test Information

Description

Instructions

Multiple Attempts This test allows multiple attempts.

Force Completion This test can be saved and resumed later.

▼ Question Completion Status:

Save All Answers

Save and Submit

QUESTION 1

1 points

Save Answer

All of the following statements regarding melanoma of the uveal tract are true except:

- Melanoma represents the most common primary intraocular malignancy in adults
- The prognosis is related to the cytologic cell type
- Melanosis oculi is a risk factor for developing melanoma
- Associated retinal detachments may be present
- Hematogenous metastases most commonly involve the lung

QUESTION 2

1 points

Save Answer

For each pair choose the one that is more strongly associated with negative prognosis in an UVEAL MELANOMA.

- An 18 mm in diameter opacity seen by transillumination from a 2 mm flat melanoma (volume 509 mm³)
- A 9 mm in diameter opacity seen by transillumination from an 8 mm mushroom-shaped melanoma (volume 509 mm³)

Equally negative

QUESTION 3**1 points**[Save Answer](#)

For each pair choose the one that is more strongly associated with negative prognosis in an UVEAL MELANOMA.

- rupture through Bruch's membrane with invasion of retina
- invasion of Schlemm s canal
- Equally negative

QUESTION 4**1 points**[Save Answer](#)

For each pair choose the one that is more strongly associated with negative prognosis in an UVEAL MELANOMA.

- spontaneous tumor necrosis
- Pagetoid spread of tumor cells
- Equally negative

QUESTION 5**1 points**[Save Answer](#)

Most common primary intraocular neoplasm in children.

- Retinoblastoma
- Choroidal malignant melanoma
- Toxocara canis
- Toxoplasmosis
- Glaucoma

QUESTION 6**1 points**[Save Answer](#)

The choroidal malignant melanoma with the worst prognosis is:

- Spindle
- Mixed
- Epithelioid
- Amelanotic
- Adenomatous

QUESTION 7**1 points**[Save Answer](#)

The following statements regarding melanin-containing pigment cells in the eye are correct EXCEPT:

- They function to keep stray light rays that enter the eye from interfering with image formation

- The pink color of the iris of an albino is due to reflection from the blood vessels
- Stromal melanocytes are neural crest-derived cells that represent the cell of origin for uveal nevi and melanomas
- Pigmentation of the anterior uveal stroma is completed after birth
- The pigment epithelium of the iris is responsible for eye color

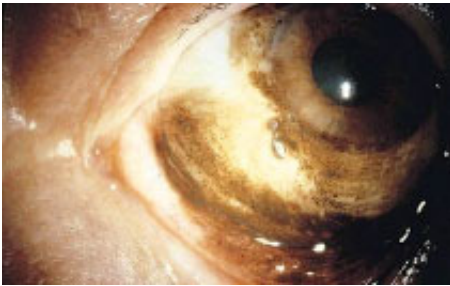
QUESTION 8**1 points****Save Answer**

The most common malignancy to involve the eyes in adults is:

- Choroidal melanoma
- Metastatic tumors
- Melanocytomas
- Hyperplasia of the retinal pigment epithelium

QUESTION 9**1 points****Save Answer**

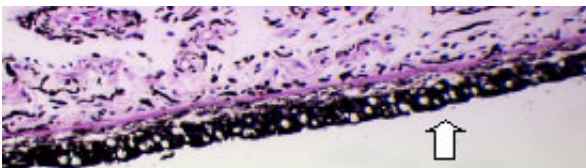
Which statement about this acquired lesion is true?



- Malignant neoplasms arising from this lesion most often metastasize to the liver
- This patient is most likely of African or Asian origin
- This is a congenital condition that presents in late childhood or early adulthood
- A biopsy of this process may be indistinguishable from a junctional nevus

QUESTION 10**1 points****Save Answer**

Which of the following statements is NOT true?



- The pigmented structure at the arrow gives rise to iris melanomas
- The pigmented structure at the arrow is related embryologically to the retina
- Pigmentation of the iris continues after birth
- This pigmented layer acts to absorb stray light and improve vision

Click Save and Submit to save and submit. Click Save All Answers to save all answers.

Save All Answers

Save and Submit