



Preview Test: Ophthalmic Pathology Quiz 3

Test Information

Description

Instructions

Multiple Attempts This test allows multiple attempts.

Force Completion This test can be saved and resumed later.

▼ Question Completion Status:

Save All Answers

Save and Submit

QUESTION 1

1 points

Save Answer

All of the following statements regarding melanoma of the uveal tract are true except:

- Melanoma represents the most common primary intraocular malignancy in adults
- The prognosis is related to the cytologic cell type
- Melanosis oculi is a risk factor for developing melanoma
- Associated retinal detachments may be present
- Hematogenous metastases most commonly involve the lung

QUESTION 2

1 points

Save Answer

Epithelioid histological type most likely to metastasize.

- Retinoblastoma
- Choroidal malignant melanoma
- Toxocara canis
- Toxoplasmosis

Glaucoma

QUESTION 3**1 points****Save Answer**

For each pair choose the one that is more strongly associated with negative prognosis in an UVEAL MELANOMA.

- An 18 mm in diameter opacity seen by transillumination from a 2 mm flat melanoma (volume 509 mm³)
- A 9 mm in diameter opacity seen by transillumination from a 8 mm mushroom-shaped melanoma (volume 509 mm³)
- Equally negative

QUESTION 4**1 points****Save Answer**

For each pair choose the one that is more strongly associated with negative prognosis in an UVEAL MELANOMA.

- spindle B morphology
- mixed spindle A and epithelioid morphology
- Equally negative

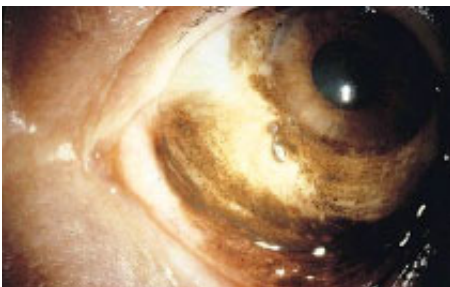
QUESTION 5**1 points****Save Answer**

For each pair choose the one that is more strongly associated with negative prognosis in an UVEAL MELANOMA.

- rupture through Bruch's membrane with invasion of retina
- invasion of Schlemm's canal
- Equally negative

QUESTION 6**1 points****Save Answer**

Which statement about this acquired lesion is true?



- Malignant neoplasms arising from this lesion most often metastasize to the liver
- This patient is most likely of African or Asian origin
- This is a congenital condition that presents in late childhood or early adulthood
- A biopsy of this process may be indistinguishable from a junctional nevus

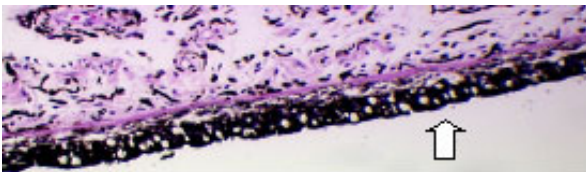
QUESTION 7**1 points****Save Answer**

Which of the following statements about uveal melanoma is true?

- Uveal melanomas rarely metastasize
- Melanomas of the ciliary body have the best prognosis
- Metastases always occur within 2 1/2 years of treatment
- Survival is directly related to tumor size

QUESTION 8**1 points****Save Answer**

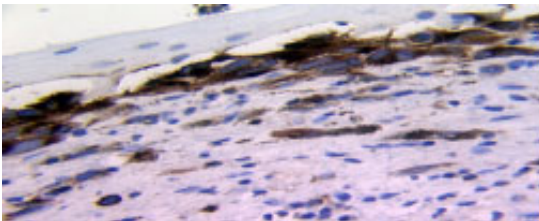
Which of the following statements is NOT true?



- The pigmented structure at the arrow gives rise to iris melanomas
- The pigmented structure at the arrow is related embryologically to the retina
- Pigmentation of the iris continues after birth
- This pigmented layer acts to absorb stray light and improve vision

QUESTION 9**1 points****Save Answer**

This biopsy could represent Addison s disease.



- True
- False

Click Save and Submit to save and submit. Click Save All Answers to save all answers.

Save All Answers**Save and Submit**