



Preview Test: Pediatric Tumor Quiz 1

Test Information

Description

Instructions

Multiple Attempts This test allows multiple attempts.

Force Completion This test can be saved and resumed later.

Question Completion Status:

Save All Answers

Save and Submit

QUESTION 1

1 points

Save Answer

A common suprasellar tumor in children is:

- meningioma
- medulloblastoma
- craniopharyngioma
- ependymoma

QUESTION 2

1 points

Save Answer

A tumor associated with Tuberous Sclerosis is:

- desmoplastic infantile ganglioglioma
- dysembryoplastic neuroepithelial tumor
- subependymal giant cell astrocytoma
- adamantinomatous craniopharyngioma

QUESTION 3

1 points

Save Answer

All of the following features characterize pilocytic astrocytomas EXCEPT

- Rosenthal fibers
- biphasic architecture
- diffuse invasion of surrounding brain
- contrast enhancement

QUESTION 4

1 points

Save Answer

All the following associated pairs are correct, EXCEPT

- medulloblastoma - Homer Wright rosettes
- ependymoma - perivascular pseudorosettes
- craniopharyngioma - wet keratin
- ganglioglioma - psammoma bodies

QUESTION 5

1 points

Save Answer

MOST pediatric brain tumors are located

- above the tentorium
- in the cerebral hemispheres
- in the spinal cord
- in the posterior fossa

QUESTION 6

1 points

Save Answer

The most common brain tumor in children with Neurofibromatosis type I is

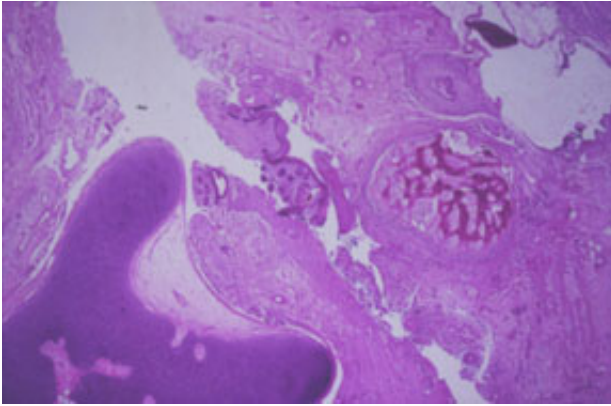
- astrocytoma of the optic nerve and chiasm
- meningioma
- medulloblastoma
- ependymoma

QUESTION 7

1 points

Save Answer

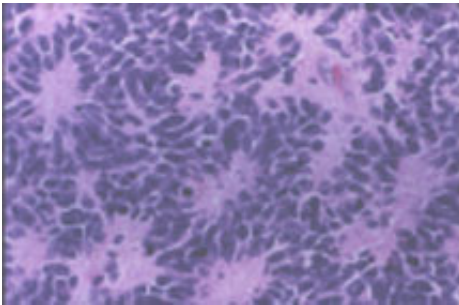
The most likely diagnosis of this pineal mass is:



- pineoblastoma
- germinoma
- teratoma
- none of the above

QUESTION 8**1 points****Save Answer**

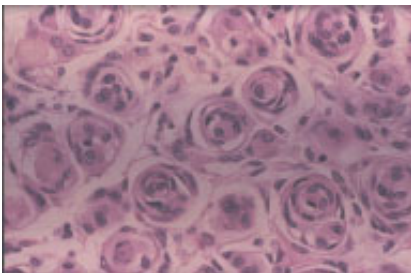
This figure shows:



- perivascular pseudorosettes
- ependymal rosettes
- meningothelial whorls
- Homer Wright rosettes

QUESTION 9**1 points****Save Answer**

This tumor is:



- more common in children than adults

- may be intraventricular in children
- is often associated with seizures
- also has binucleate neurons

QUESTION 10**1 points****Save Answer**

Tumors of the lateral ventricles in children include all EXCEPT

- Choroid plexus papilloma
- Subependymal giant cell astrocytoma
- Meningiomas
- Craniopharyngiomas

Click Save and Submit to save and submit. Click Save All Answers to save all answers.

Save All Answers**Save and Submit**