



Preview Test: Pediatric Tumor Quiz 2

Test Information

Description

Instructions

Multiple Attempts This test allows multiple attempts.

Force Completion This test can be saved and resumed later.

▼ Question Completion Status:

Save All Answers

Save and Submit

QUESTION 1

1 points

Save Answer

A pineal tumor in a young male is most likely:

- germinoma
- pineocytoma
- pineoblastoma
- none of the above

QUESTION 2

1 points

Save Answer

A tumor commonly associated with seizures in children is

- pilocytic astrocytoma
- ganglioglioma
- medulloblastoma
- ependymoma

QUESTION 3**1 points****Save Answer**

All the following are true of glioblastoma multiforme (astrocytoma, grade IV) tumors in children, EXCEPT

- numerous mitoses
- necrosis with pseudopallisading
- endothelial proliferation
- often arise from Grade II or grade III astrocytomas

QUESTION 4**1 points****Save Answer**

All the following associated pairs are correct, EXCEPT

- medulloblastoma - Homer Wright rosettes
- ependymoma - perivascular pseudorosettes
- craniopharyngioma - wet keratin
- ganglioglioma - psammoma bodies

QUESTION 5**1 points****Save Answer**

Meningioangiomas

- is a disease with multiple meningiomas of the brain and spinal cord
- is more common in adults than children
- is a malignant form of a meningioma with seeding of the cerebrospinal fluid
- is often associated with seizures

QUESTION 6**1 points****Save Answer**

MOST pediatric brain tumors present with

- seizures
- headache and vomiting
- personality changes
- a large lump on the head

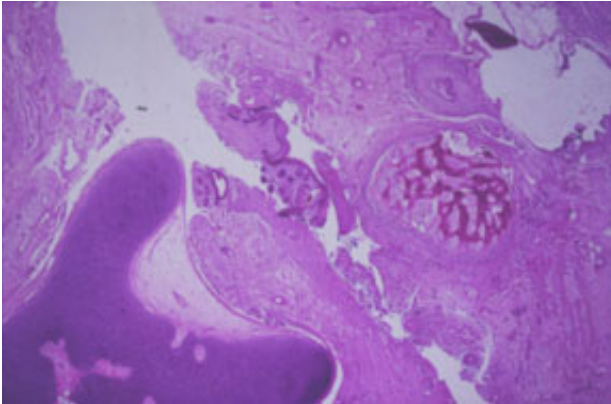
QUESTION 7**1 points****Save Answer**

The most common tumors in the posterior fossa in children include all EXCEPT

- choroid plexus papilloma
- medulloblastoma
- pilocytic astrocytoma
- ependymoma

QUESTION 8**1 points****Save Answer**

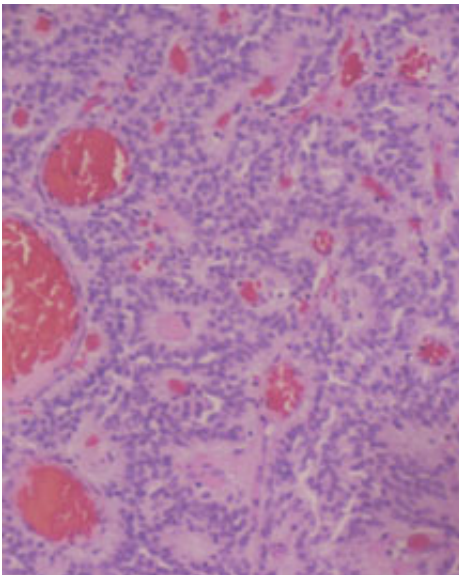
The most likely diagnosis of this pineal mass is:



- pineoblastoma
- germinoma
- teratoma
- none of the above

QUESTION 9**1 points****Save Answer**

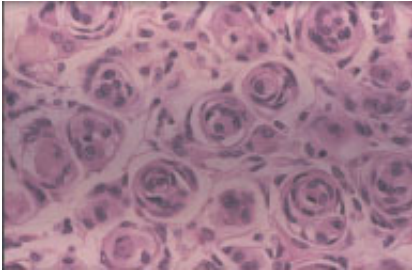
The most likely diagnosis of this posterior fossa tumor in a child is:



- ependymoma
- pilocytic astrocytoma
- ganglioglioma
- glioblastoma multiforme

QUESTION 10**1 points****Save Answer**

This tumor is:



- more common in children than adults
- may be intraventricular in children
- is often associated with seizures
- also has binucleate neurons

Click Save and Submit to save and submit. Click Save All Answers to save all answers.

Save All Answers**Save and Submit**