



Preview Test: Pediatric Tumor Quiz 3

Test Information

Description

Instructions

Multiple Attempts This test allows multiple attempts.

Force Completion This test can be saved and resumed later.

▼ Question Completion Status:

Save All Answers

Save and Submit

QUESTION 1

1 points

Save Answer

A tumor associated with Tuberous Sclerosis is:

- desmoplastic infantile ganglioglioma
- dysembryoplastic neuroepithelial tumor
- subependymal giant cell astrocytoma
- adamantinomatous craniopharyngioma

QUESTION 2

1 points

Save Answer

A tumor commonly associated with seizures in children is

- pilocytic astrocytoma
- ganglioglioma
- medulloblastoma
- ependymoma

QUESTION 3**1 points****Save Answer**

All the following are true of glioblastoma multiforme (astrocytoma, grade IV) tumors in children, EXCEPT

- numerous mitoses
- necrosis with pseudopallisading
- endothelial proliferation
- often arise from Grade II or grade III astrocytomas

QUESTION 4**1 points****Save Answer**

All the following associated pairs are correct, EXCEPT

- medulloblastoma - Homer Wright rosettes
- ependymoma - perivascular pseudorosettes
- craniopharyngioma - wet keratin
- ganglioglioma - psammoma bodies

QUESTION 5**1 points****Save Answer**

MOST pediatric brain tumors are located

- above the tentorium
- in the cerebral hemispheres
- in the spinal cord
- in the posterior fossa

QUESTION 6**1 points****Save Answer**

MOST pediatric brain tumors present with

- seizures
- headache and vomiting
- personality changes
- a large lump on the head

QUESTION 7**1 points****Save Answer**

The most common tumors in the posterior fossa in children include all EXCEPT

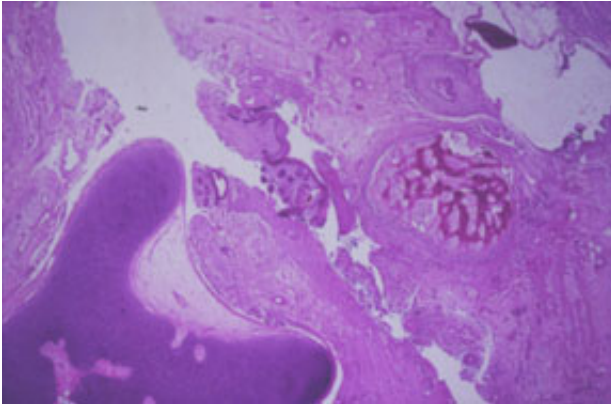
- choroid plexus papilloma
- medulloblastoma
- pilocytic astrocytoma
- ependymoma

QUESTION 8

1 points

Save Answer

The most likely diagnosis of this pineal mass is:



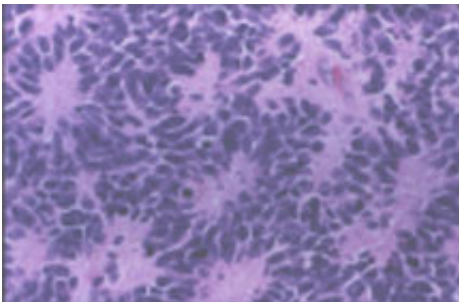
- pineoblastoma
- germinoma
- teratoma
- none of the above

QUESTION 9

1 points

Save Answer

This figure shows:



- perivascular pseudorosettes
- ependymal rosettes
- meningothelial whorls
- Homer Wright rosettes

QUESTION 10

1 points

Save Answer

Tumors of the lateral ventricles in children include all EXCEPT

- Choroid plexus papilloma
- Subependymal giant cell astrocytoma
- Meningiomas
- Craniopharyngiomas

Click Save and Submit to save and submit. Click Save All Answers to save all answers.

Save All Answers

Save and Submit