

## Preview Test: Forensic - CNS Trauma Quiz 3

### Test Information

Description  
Instructions  
Multiple Attempts This test allows multiple attempts.  
Force Completion This test can be saved and resumed later.

▼ Question Completion Status:

Save All Answers

Save and Submit

### QUESTION 1

1 points

Save Answer

The lesion in the gross photograph below is associated with what type of fractures:



- a. Fractures of the middle cranial fossa
- b. Fractures of the posterior cranial fossa

- c. Fractures of the maxillary bones
- d. Fractures of the anterior cranial fossa
- e. Fractures of the squamous temporal bone

**QUESTION 2****1 points****Save Answer**

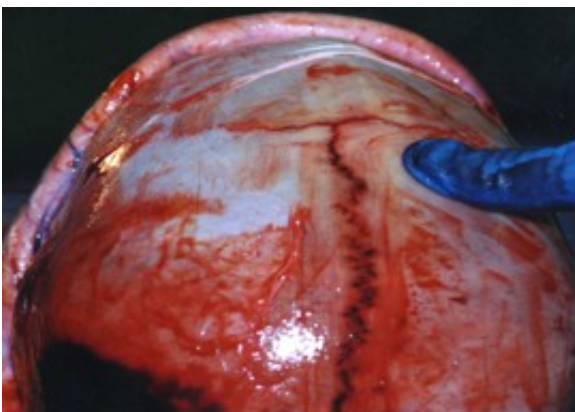
What type of scalp hemorrhage is depicted in this gross photomicrograph:



- a. Pericranial scalp hemorrhage
- b. Epicranial scalp hemorrhage
- c. Subcutaneous scalp hemorrhage
- d. Sub-galeal scalp hemorrhage
- e. Intramusial scalp hemorrhage

**QUESTION 3****1 points****Save Answer**

What type of skull fracture is shown in this gross photomicrograph:



- a. A fracture artifact
- b. Ring fracture
- c. Hinge fracture
- d. Mid-sagittal fracture
- e. Sutural diastasis

**QUESTION 4****1 points****Save Answer**

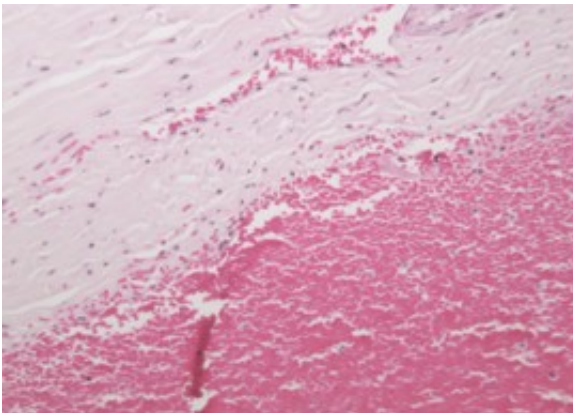
The vessels, which are illustrated in this gross photomicrograph are associated with what type of traumatic hemorrhage:



- a. Epidural hemorrhages
- b. Intraventricular hemorrhages
- c. Subarachnoid hemorrhages
- d. Subdural hemorrhages
- e. Intraparenchymal hemorrhages

**QUESTION 5****1 points****Save Answer**

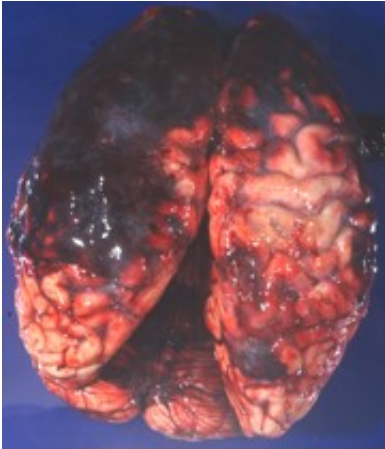
On non-contrast CT scan of the head, the subdural hemorrhage, which is shown in this photomicrograph will appear:



- a. Isodense
- b. Hypodense
- c. Indistinguishable from normal brain
- d. Contrast-enhancing
- e. Hyperdense

**QUESTION 6****1 points****Save Answer**

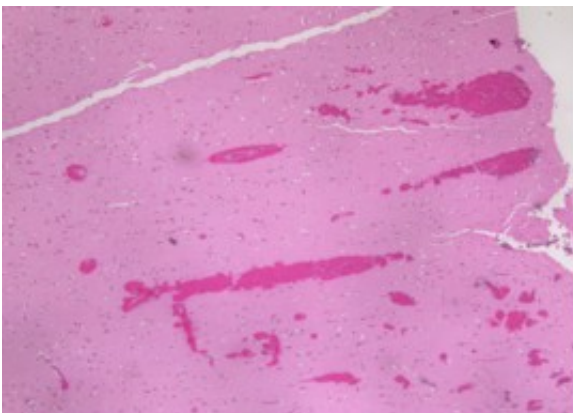
These intracranial hemorrhages are:



- a. Subarachnoidal hemorrhages
- b. Subdural hemorrhages
- c. Epidural hemorrhages
- d. Intraventricular hemorrhages
- e. Intraparenchymal hemorrhages

**QUESTION 7****1 points****Save Answer**

These parenchymal hemorrhages are consistent with:



- a. Subarachnoid hemorrhages
- b. Hypertensive hemorrhagic infarction
- c. Contusion hemorrhages
- d. Parenchymal hemorrhages
- e. Ischemic infarction

**QUESTION 8****1 points****Save Answer**

The plain X-ray of the head of this patient shows evidence of a gunshot wound of the head. This

The plain X-ray of the head of this patient shows evidence of a gunshot wound of the head. This wound is consistent with what type of firearm?



- a. A handgun
- b. A rifle
- c. A submachine gun
- d. A machine gun
- e. A shotgun

#### QUESTION 9

1 points

Save Answer

**(Select the appropriate answer(s) to this question.)**

The gross photograph of this gunshot wound of the head may have been caused by what type of firearm?



- a. Low velocity firearm
- b. High velocity firearm
- c. Handgun
- d. Rifle
- e. None of the above

*Click Save and Submit to save and submit. Click Save All Answers to save all answers.*

Save All Answers

Save and Submit