



## Preview Test: Vascular Quiz 1

### Test Information

Description

Instructions

Multiple Attempts This test allows multiple attempts.

Force Completion This test can be saved and resumed later.

▼ Question Completion Status:

Save All Answers

Save and Submit

### QUESTION 1

1 points

Save Answer

May result from mild head trauma in the elderly.

- Epidural hematoma
- Subdural hematoma
- Intracerebral hemorrhage
- All of the above
- None of the above

### QUESTION 2

1 points

Save Answer

Most likely found in thalamus and putamen.

- Hypertensive hemorrhage
- Traumatic hemorrhage
- Both
- Neither

**QUESTION 3****1 points****Save Answer**

Potential complication of amyloid angiopathy.

- Intracerebral hemorrhage
- Epidural hematoma
- Subdural hematoma
- All of the above
- None of the above

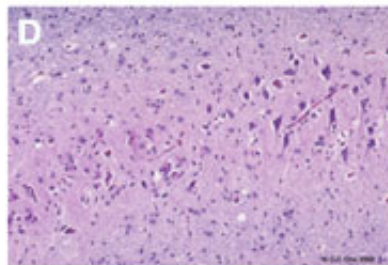
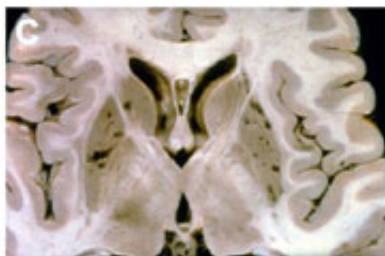
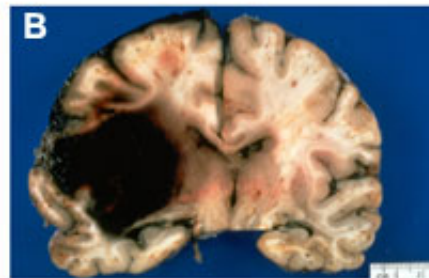
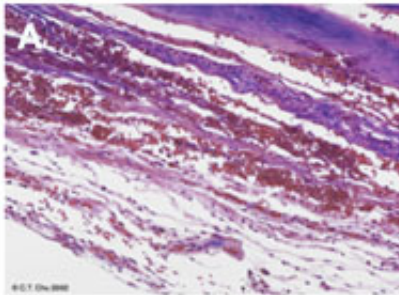
**QUESTION 4****1 points****Save Answer**

Rapid coma and profound hemiplegia in a patient with hypertensive intracerebral hemorrhage is a sign related to which location:

- Putamen
- Cerebellum
- Pons
- Occipital lobe (white matter)
- Frontal lobe (white matter)

**QUESTION 5****1 points****Save Answer**

Which two panels show pathology related to a common etiology (cause)?



- Panels A & B
- Panels B & C
- Panels B & D
- None. All are independent etiologies

**QUESTION 6****1 points****Save Answer**

Sometimes seen with severe hypertension.

- Epidural hematoma
- Subdural hematoma
- Intracerebral hemorrhage
- All of the above
- None of the above

**QUESTION 7****1 points****Save Answer**

The most common neurovascular lesions is:

- Arteriovenous malformation
- Cerebral hemorrhage
- Cerebral infarction
- Spinal cord infarction
- Subarachnoid hemorrhage

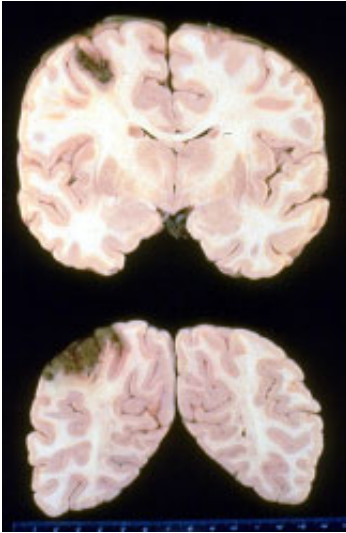
**QUESTION 8****1 points****Save Answer**

The most reliable histologic feature of an arteriovenous malformation is:

- Calcification of vessel walls
- A tangle of abnormal blood vessels with elastic lamina
- Intimal fibrosis and musculoelastic pads
- Medial fibrosis
- Disruption of internal elastic lamina

**QUESTION 9****1 points****Save Answer**

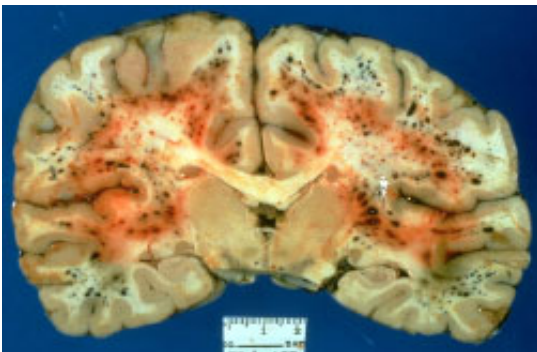
Which of these statements is most accurate?



- The lesions indicate the site of brain contusion from skull fracture
- The patient most likely experienced cardiac arrest a week prior to death
- The patient died of disseminated aspergillosis with emboli to the brain
- This is a subacute middle cerebral artery infarct with microhemorrhages

**QUESTION 10****1 points****Save Answer**

Which statement best describes this pathology?



- This patient probably had small mucosal hemorrhages
- This is the typical appearance of fat emboli to the brain
- This patient could have been in a car accident
- All of the above are true

**QUESTION 11****1 points****Save Answer**

Which is the vessel most commonly involved in subdural hemorrhages?

- Middle cerebral artery
- Meningeal artery
- Bridging veins
- Superior sagittal sinus

*Click Save and Submit to save and submit. Click Save All Answers to save all answers.*

Save All Answers

Save and Submit